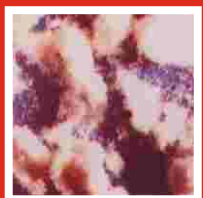


# Septechnik

**Mechanical / Hydraulic Pusher Centrifuges**  
Single / Double / Tripple stages depending on requirements



**Take an Advantages of our Experience**

# Septechnik Pusher Centrifuges



## Design Features

- Continuous separation
- Less particle breakage
- Low residual moisture
- High solids recovery
- Higher solids throughput
- Lower power consumption
- High washing efficiency
- Minimum floor space
- Low maintenance costs
- Better designed shaft sealing
- Better vibration isolation system



## Application Spectrum

- Bulk chemicals
- Fine chemicals
- Pharmaceuticals
- Fertilizers
- Salt industries
- Mining and Minerals
- Fibre industries
- Food industries
- Nuclear power
- Textiles and papers
- Pesticides industries



## Used successfully for

ABS Polymerisate	Dextrose	Nickel Sulfate	Potassium Nitrate	Sodium Nitrite
Adipic Acid	Dicalcium Phosphate	NPK Fertilizer	Potassium Sulfate	Sodium Perborate
Ammonium Bicarbonate	Dispersion Rubber	Nitro Cellulose	Rock Salt	Sodium Percarbonate
Ammonium Bisulfate	E. D. T. A.	Nylon Chips	Salicylic Acid	Sodium Sulfate Anhydride
Ammonium Bromide	Endo Sulfan	Nylon Salt	Sea Salt	Sodium Sulfate Dehydrate
Ammonium Chloride	Ferrous Sulphate	Oxalic Acid	Silver Nitrate	Sorbic Acid
Ammonium Nitrate	Fructose	Para Amino Phenol	Silicon Flouride	Strontium Chloride
Ammonium Perborate	Furmaric Acid	Paracresol	Soda Products	Sulfates - Ferrous
Ammonium Sulphate	Glauber Salt	Paracetamol	Sodium Bi-carbonate	Sulfamic Acid
Ascorbic Acid	Glutamic Acid	Paraxylene	Sodium Carbonate	Sulphanethaxozole
Barium Carbonate	Hexamine	Penta Technical	Sodium Chlorate	Sylvinite
Barium Chloride	HT-Polypropylene	Perchlorate	Sodium Chloride	Synthetic Resin
Bead Polymers	Iron Sulphate	Pesticides	Sodium Cyanides	Tartaric Acid
Borax (raw)	Lactone	Phosphate crude / raw	Sodium Dichromate	Terephthalic Acid
Boric Acid	Lactose	Polyacrylate	Sodium Formate	Tincal
Calcium Nitrate	Lead Nitrate	Polyethylene	Sodium Hypophoshite	Tin Sulphate
Calcium Phosphate	Linters	Polypropylene	Sodium Phosphate	Tobias Acid
Calcium Sulfate	Lithium Compounds	Polyvinyl Chloride	Sodium Sulfate	Urea
Caustic Soda	Magnesium Sulfate	Potassium Carbonate	Sodium Sulfite	Zinc Acetate
Cellulose Acetate	Melamine	Potassium Chlorate	Sodium Bi-sulfite	Zinc Sulfate
Chlorinated Rubber	Metal Salt	Potassium Chloride	Sodium Metabisulfite	Zinc Sulfate Heptahydrate
Copper Sulphate	Milk Sugar	Potassium Cyanides	Sodium Nitrate	Zinc Sulfate Monohydrate

**(The list of application is endless, we are sure to provide most suitable solution for your separation problems)**



## Best suitable for

1. Crystalline products with an average particle size in the range of 0.10 mm to 10 mm and fibrous materials up to 20 mm fibre length.
2. Solid concentration of the slurry to be separated will be normally in range between 30% to 75% w/w for all crystalline products and 3% to 12% w/w for fibrous materials.
3. We can able to separate some finer crystals having size can be as small as 0.08 mm to 0.1 mm with use of 50 micron screen and with specially designed pre thickner at input of centrifuge.
4. Very fine and little sticky products also get separation with multistage basket Centrifuges.

**(We always be ready to test your new products at our/your works with our pilot centrifuge at different parameters)**

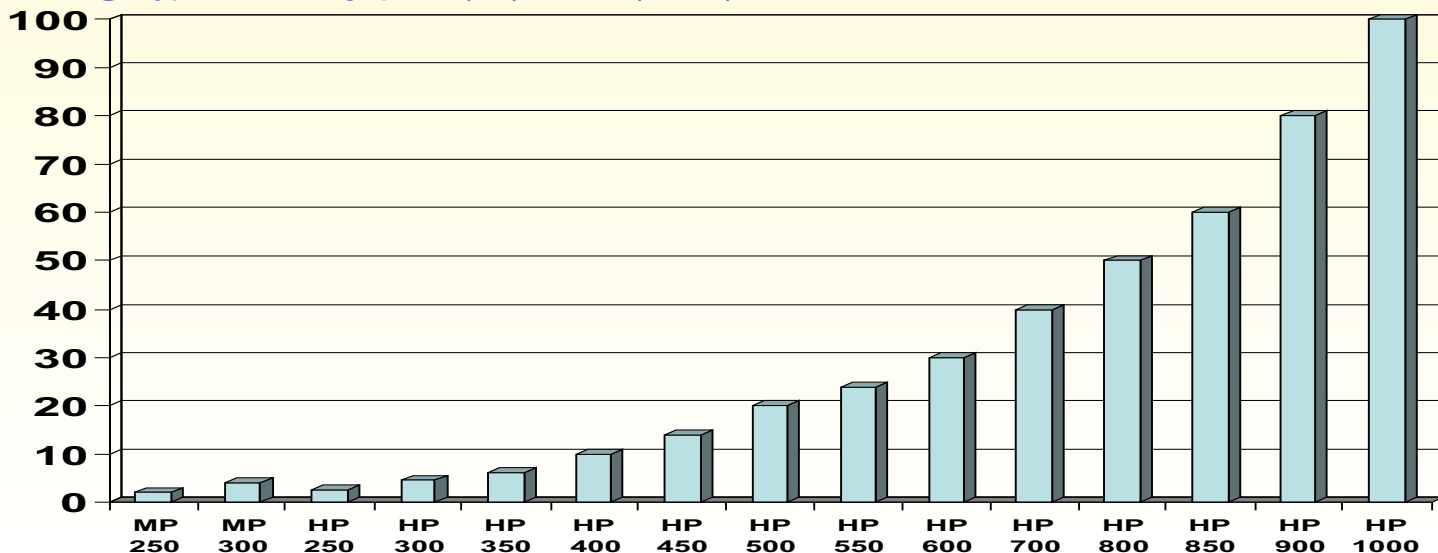
# Septechnik Range of Pusher Centrifuges

Model		MP 150	MP 200	MP 250	HP 200	HP 250	HP 300	HP 350	HP 400
Basket dia.	mm	150	200	250	200	250	300	350	400
Slurry feed	via	Pipe	Pipe	Pipe	Pipe	Pipe	Pipe	Pipe	Pipe/screw
No. of stages	---	1 / 2	1 / 2	1 / 2	1 / 2	1 / 2	1 / 2	1 / 2	1/2/3
Max. speed	rpm	3200	3000	2700	3200	3000	2800	2500	2200
No. of stroke	spm	30-60	40-80	40-80	50-120	50-120	50-120	50-120	50-120
Max. G-force	xg	850	1000	1000	1140	1250	1300	1215	1075
Main motor	Hp rpm	3 2880	5 2880	7.5 2880	5 2880	7.5 2880	10 2880	10 2880	15 1440
Pump motor	Hp rpm	2 1440	5 1440	5 1440	5 2880	5 2880	7.5 2880	7.5 2880	7.5 2880
Dimension (L) (W) (H)	Mtr.	1.1 0.55 0.53	1.5 1.1 1.0	1.6 1.15 1.0	1.9 1.0 1.1	2.0 1.1 1.1	2.1 1.1 1.15	2.2 1.1 1.2	2.2 2.2 1.25
Weight @	Kgs.	430	700	900	900	1200	1400	1600	1800
NaCl cap. @	Ton/hr.	0.2	0.5	1.0	0.6	1.2	2.4	3.5	5.0

Model		HP 450	HP 500	HP 550	HP 600	HP 700	HP 800	HP 850	HP 900
Basket dia.	mm	450	500	550	600	700	800	850	900
Slurry feed	via	Pipe/screw	Pipe/screw	Pipe/screw	Pipe/screw	Pipe/screw	Pipe/screw	Pipe/screw	Pipe/screw
No. of stages	---	1/2/3	1/2/3	1/2/3	1/2/3	1/2/3	1/2/3	1/2/3	1/2/3
Max. speed	rpm	2000	1800	1600	1500	1300	1100	1000	950
No. of stroke	spm	50-110	50-110	50-110	50-110	50-100	50-90	50-90	50-90
Max. G-force	xg	1000	900	780	750	660	540	475	450
Main motor	Hp rpm	20 1440	20 1440	25 1440	30 1440	40 1440	50 1440	50 1440	60 1440
Pump motor	Hp rpm	10 2880	10 2880	15 2880	20 2880	25 2880	30 2880	40 2880	40 2880
Dimension (L) (W) (H)	Mtr.	2.4 1.2 1.2	2.5 1.25 1.3	2.6 1.35 1.4	2.6 1.35 1.5	3.1 1.5 1.6	3.2 1.6 1.75	3.2 1.6 1.8	3.3 1.7 1.95
Weight @	Kgs.	2100	2300	2500	2800	4600	5500	5800	6500
NaCl cap. @	Ton/hr.	7.5	10.0	12.5	15.0	18-20	22-25	28-30	32-35

## INDIA'S LARGEST RANGE IN PUSHER CENTRIFUGES

 @ Typical throughputs (t/h) - Salt (NaCl)



- All above dimensions / parameters are for reference only and may vary subject to the input parameters as well as due to design modifications.
- Material of construction available - SS 304 / SS 304L / SS 316 / SS 316L.  
Special alloys i.e. Hastelloy, SS 904L, Duplex, Super Duplex, etc. on request.



# Septechnik Assure The Best Quality Centrifuges



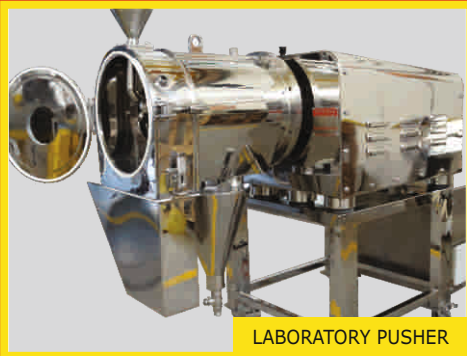
CHEMICAL PUSHER



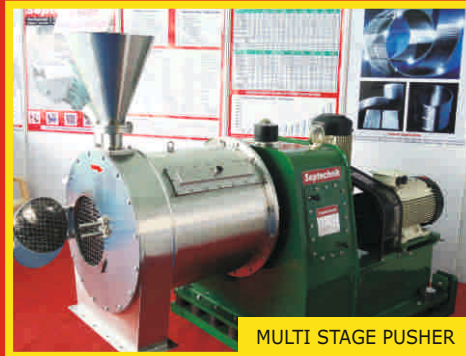
PHARMA PUSHER



SPECIAL PUSHER



LABORATORY PUSHER



MULTI STAGE PUSHER



MECHANICAL PUSHER



ASSEMBLY SHOP

## **Septechnik Engineers**

**SEPTECHNIK**  
Centrifuge Technology

**Works :** A1/923/1B, G.I.D.C. Industrial Estate, Opp. Hem Marketing, Makarpura, Vadodara - 390 010 Gujarat, INDIA

**Telefax :** +91-265-2641585 / +91 9227002525

**Cell :** +91 9824515558 / 9924777861

**E-mail :** [septechnik@yahoo.co.in](mailto:septechnik@yahoo.co.in)  
[info@septechnik.com](mailto:info@septechnik.com)

**Website:** [www.septechnik.com](http://www.septechnik.com)

[www.pushercentrifuges.com](http://www.pushercentrifuges.com)

**Mfg. of Mechanical and Hydraulic Pusher Centrifuges**